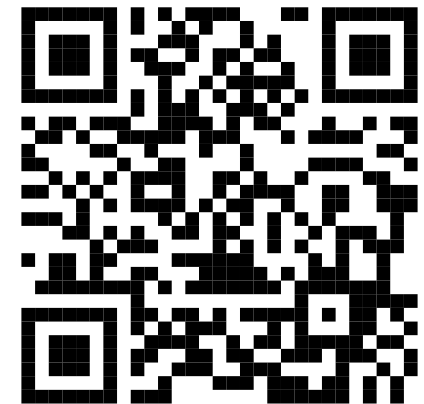


Introduction



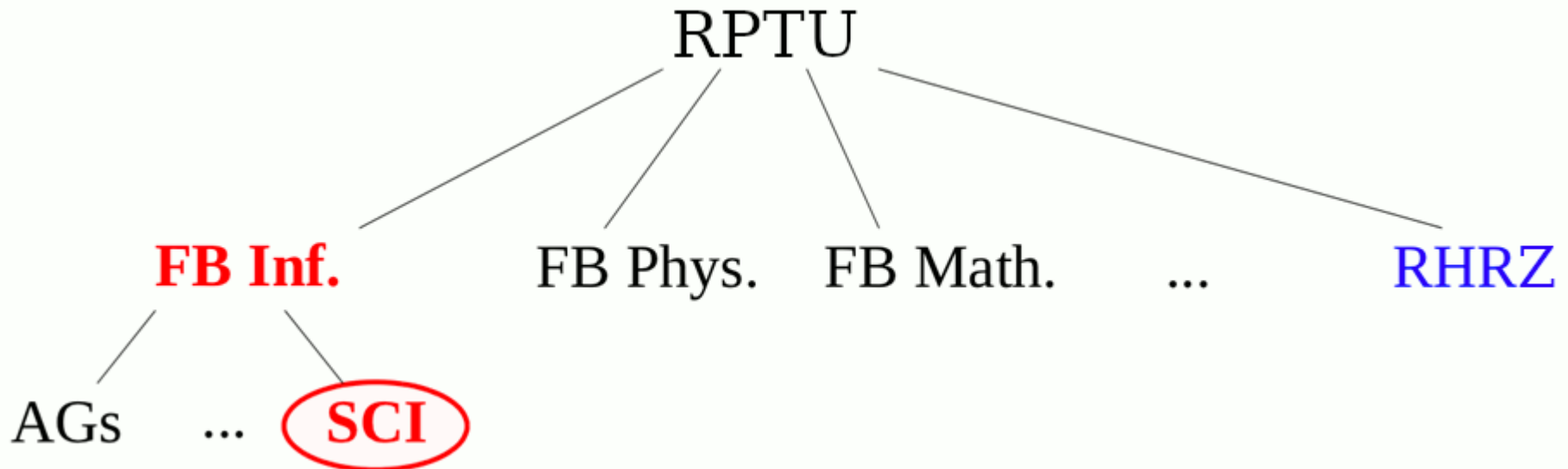
<https://sci.cs.rptu.de>



<https://sci-accounts.cs.rptu.de>

Computer Center

- Structure of institutions at RPTU



- **SCI** = "Service-Center Informatik"
Computer Center Dep. Computer Science
- **RHRZ** = "Regionales Hochschul-Rechenzentrum
Kaiserslautern-Landau"
Computer Center RPKL

Team

- **Dr. Joachim Thees**
 - Head of the SCI
- **Moritz Bayer**
 - Web-services, account management, virtualisation, windows-systems, printers
- **Christian Endler**
 - Web-services, account management, lectures, virtualisation
- **Jonas Lukasczyk**
 - Web-Services, lectures
- **Daniel Sponheimer**
 - Account management, printers, virtualisation, linux-systems


Software development

- Central Module Handbook of the RPTU
- Accountmanagement
 - <https://sci-accounts.cs.rptu.de>
- VLU – Lecture evaluation
 - <https://vlu.cs.rptu.de/>
- KAI – Exam protocols
 - <https://sci-kai.cs.rptu.de/>
- JOBS – Job market
 - <https://fit-jobs.cs.rptu.de>
- SUBMISSION – Submit your Master Thesis
 - <https://submission.cs.rptu.de/>
- APPLYMSC – Application Plattform
 - <https://applymsc.cs.rptu.de>
- ...

Services

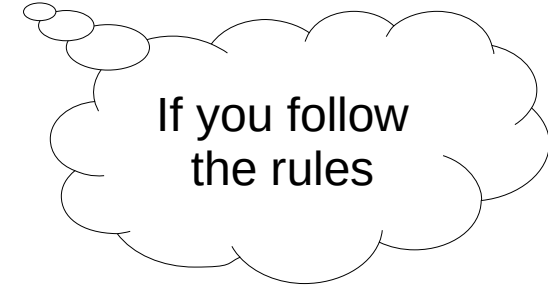
- SCI-accounts
- login-server (Terminals, Remotezugriff)
- printing
- Gitlab CE (seperate registration needed)
- ShareLaTeX (seperate registration needed)
- soft- und hardware support
- v-server hosting
- Software development

Account

- Consists of:
 - login (e.g. “j_smith24”)
 - password (e.g. “8d%sAf7S\$apPOis!%ds12”)
 - homedirectory (e.g. “/home/j_smith24/”, 4 GB)
 - printaccount (using printers at SCI)
 - Where to get your account:
 - **SCI:** only **computer science students**
 - **RHRZ:** all students at TUK
- 
- Create your SCI account on <https://sci-accounts.cs.rwth.de>

Account

- Accounts are valid as long as you study here



- Please follow the rules:
 - <http://sci.cs.rptu.de/en/rechnerzugang/ordnungen/>

Server-Cluster

- SCI-Login-Server mit **LINUX**

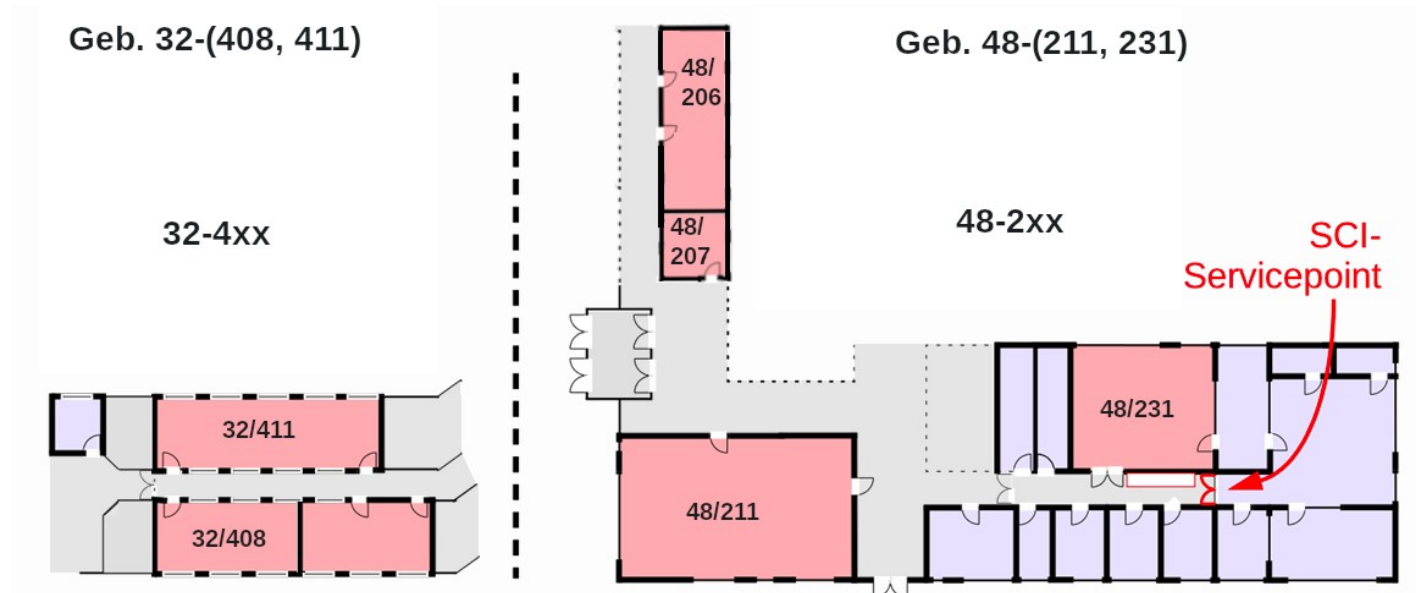
Plattform:	- Dell Power Edge R740 (56 Cores, 256 GB RAM) - Dell Power Edge R730 (48 Cores, 256 GB RAM)
Virtual Hosts:	tux1 – tux3, (Ubuntu german) tux5 – tux6, (Ubuntu german) tux8, tux9 (Ubuntu english)

- SCI V-Server hosting (**LXC, KVM**)

Plattform:	1 * Transtec HPC Compute Node (64 Cores, 256 GB RAM)
Virtual Hosts:	scilab-*.cs.uni-kl.de lectures, projects, thesis, research

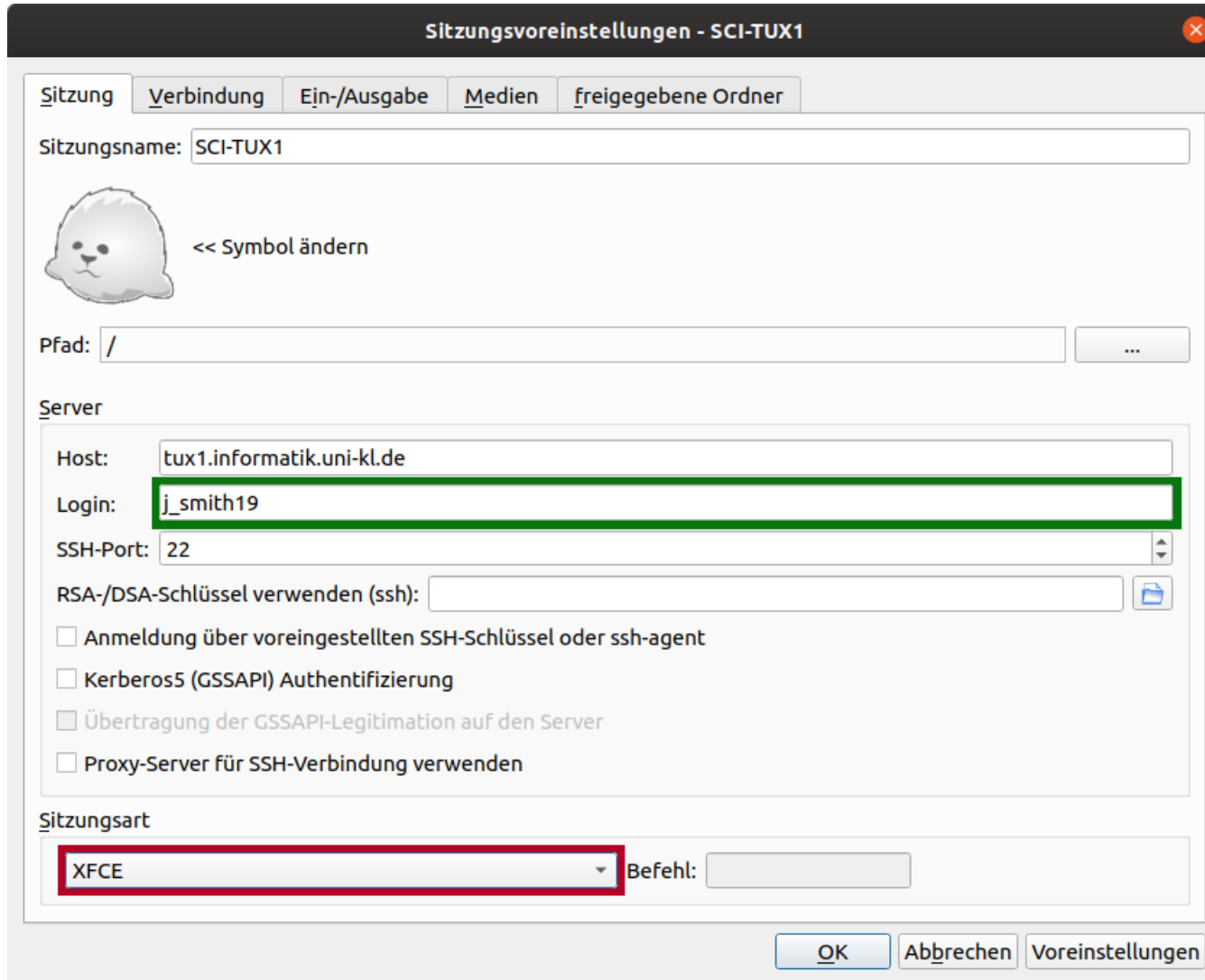
Terminals

- terminalrooms



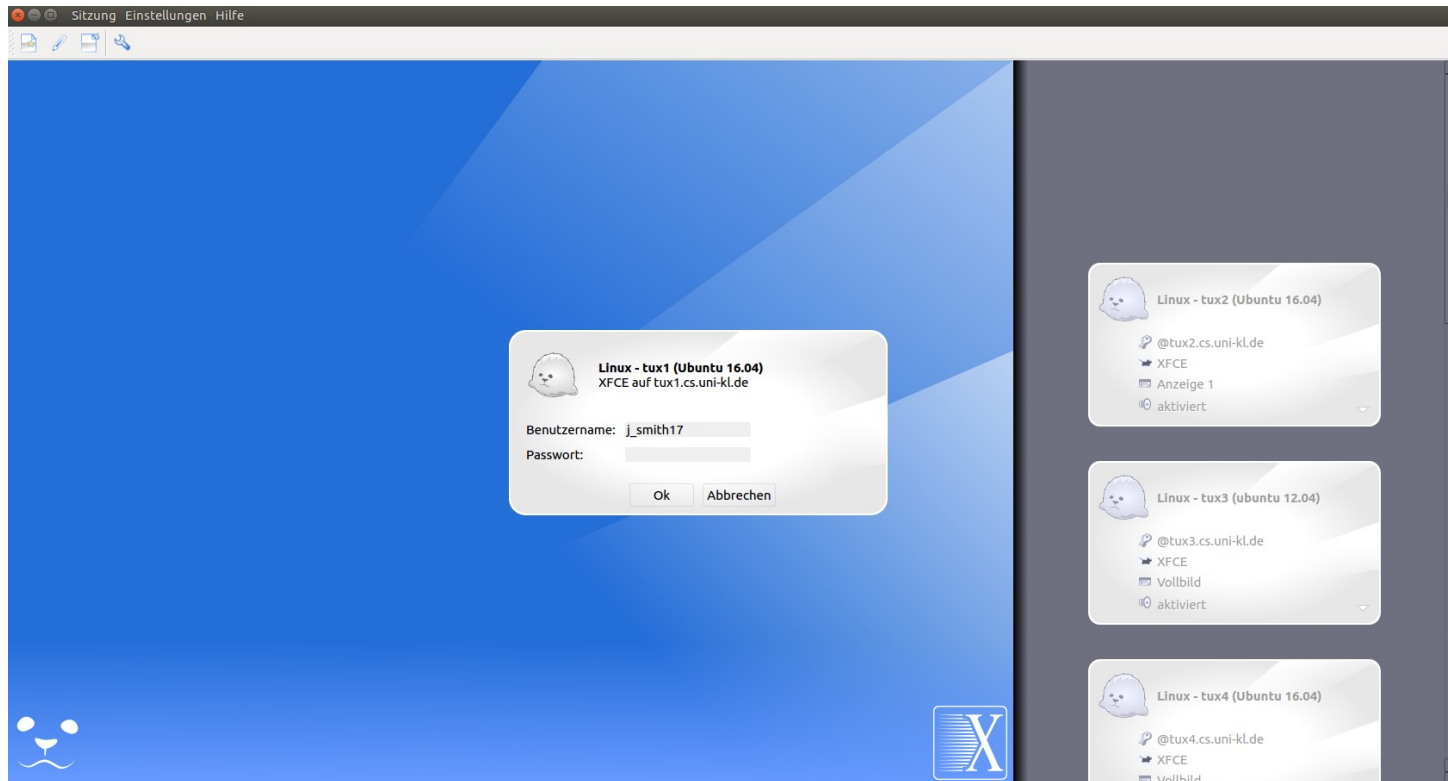
Building - Room	Terminals	Type
48 - 206	0	Learningspace
48 - 207	0	Software Lab
48 - 211	19	Terminalroom
48 - 231	12	Terminalroom
36 - 370	2	Library
32 - 408	7	Terminalroom
32 - 411	20	Terminalroom

X2Go



Client at: <https://wiki.x2go.org/doku.php/doc:installation:x2goclient>

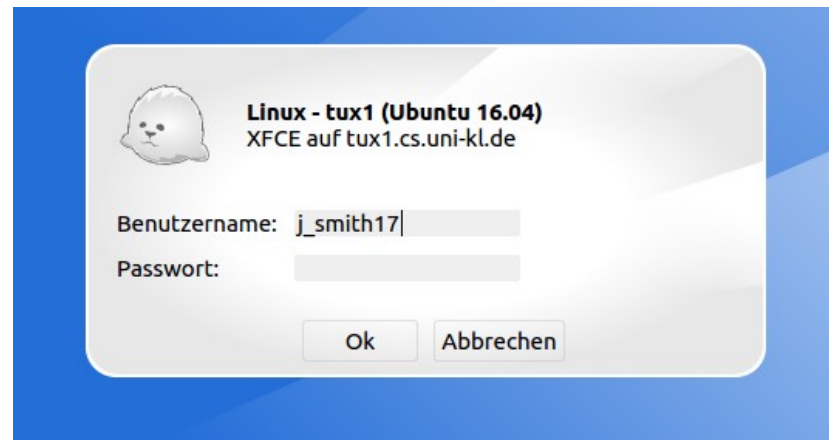
Sessionstarter



OS	Protocol	Encryption
Linux	X11/SSH	yes
Linux	X2Go	yes

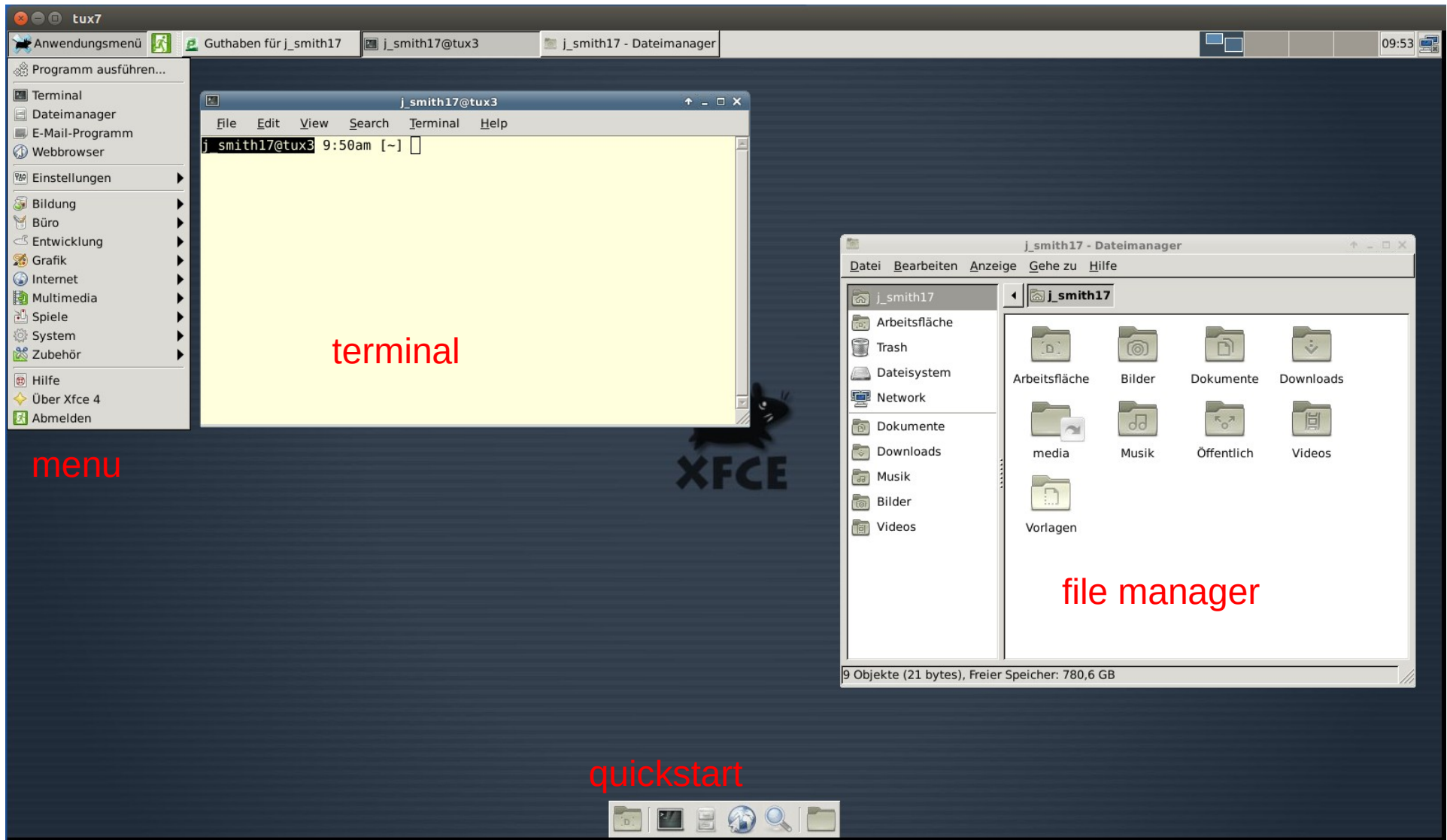
Systemlogin

- Connect to servers with login (username) and password.



- Attention!
 - Make sure noone sees your password while you type it.
Keep you password secret!

Linux - XFCE



Applications

- Firefox, Chrome
- Thunderbird
- Libre-Office
- Atril (PDF)
- Gimp
- Texmaker
- Eclipse
- Visual Studio Code
- Compilers javac, gcc, g++ ...
- Something missing? Just ask !

Remote access

Login	Program	From
linux-server (tux*)	SSH (Text)	everywhere
linux-server (tux*)	X2Go-Client	everywhere

File transfer	Program	From
from / to linux-server	(Win)SCP	everywhere

- More information
 - <http://sci.cs.rptu.de/en/rechnerzugang/remote>
 - <https://wiki.x2go.org>
 - <https://winscp.net>

Printing

- Monochrome laserprinters **A4** (Postscript)
 - printername **scibw**: onesided (terminalrooms: **scibwt32411**, **scibwt48211**)
 - printername **scibwd**: duplex (terminalrooms: **scibwt32411d**, **scibwt48211d**)
- Costs (print quota)
 - 1,50 EUR / month for free (max. 4,50 €)
 - you can buy additional print quota at SCI (cash only)
 - costs **onesided**: 4 ct per page (= 20 ct for 5 pages)
 - Kosten **duplex**: 3 ct per page (= 15 ct for 5 pages)
- **Paperformat: A4!** Only meaningful printouts!

Printing

- Papercut
 - only accessible from within the university network
 - <https://sci-print.cs.rptu.de:9192>
 - PDF-files can be printed using the Web interface
 - confirm/start printjobs
 - display print quota
- Pickup your printouts in the hallway in front of 48-226
- Keep in mind the special rules for printouts on the printers in the terminal rooms: https://sci.cs.rptu.de/en/dienste/drucken/drucker_tr

Security

- **Keep your password secret!** Change it if you suspect that someone else might know it.
- Use different passwords for different Accounts.
 - You can use a password manager if you want/need to.
- Don't type in your password on a different site/service.
- Log out or **lock your screen** if you have to leave your computer/terminal for a moment.
- Always use **encrypted connections** when typing in your password.
- No write permission for groups (g) or others (o) on files in your home directory
 - Good: ``chmod -R go-w ~``
 - Better: ``chmod -R go-rwx ~``
- Careful with unknown scripts and binaries/programs

Contact:

- **SCI-Office (Service Point)**

Building 48, room 226

Mo – Th 9:00 – 16:00

Fr. 9:00 – 13:00

- **Web**

<https://sci.cs.rpt.de>

- **E-Mail**

sci@cs.rptu.de

- **Phone**

0631 – 205 2655